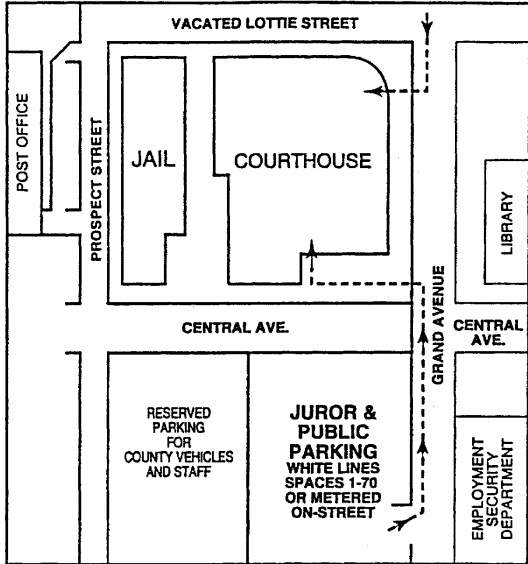
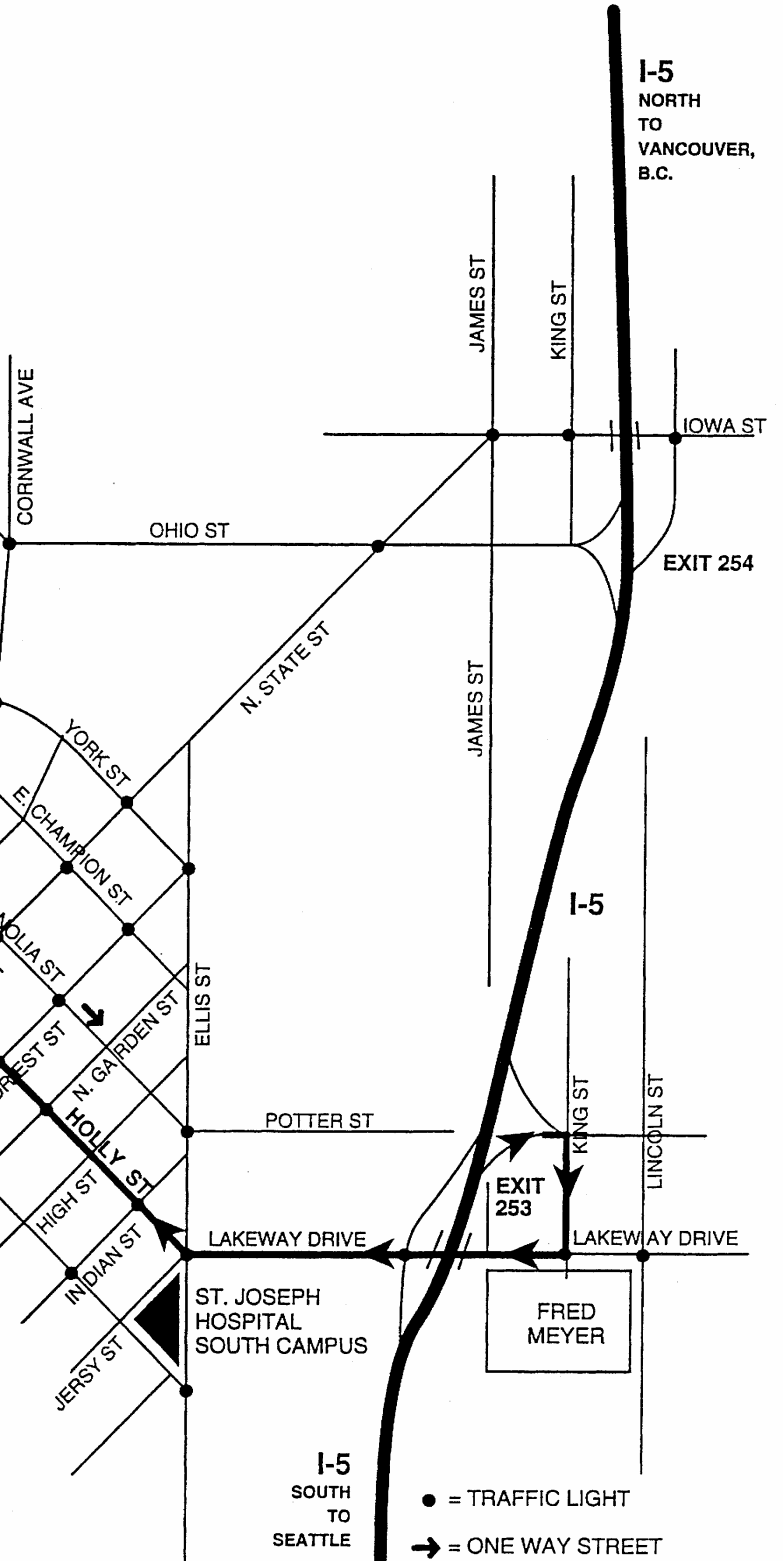


UNASSIGNED PARKING AREA
70 SPACES



DIRECTIONS TO WHATCOM COUNTY COURTHOUSE, BELLINGHAM, WASHINGTON

DIRECTIONS: EXIT I-5 at exit 253, go to stop sign; turn right; at light turn right onto Lakeway; go to second light & turn rightish onto Holly (Lakeway becomes Holly); pass through seventh light on Commercial St., turn right onto Prospect St. at next light; Courthouse/Jail is fourth block on right; entrance to parking lot is 2-1/2 blocks on right, park in white lined parking places or use metered parking around courthouse.



I-5
SOUTH
TO
SEATTLE

- = TRAFFIC LIGHT
- ➔ = ONE WAY STREET